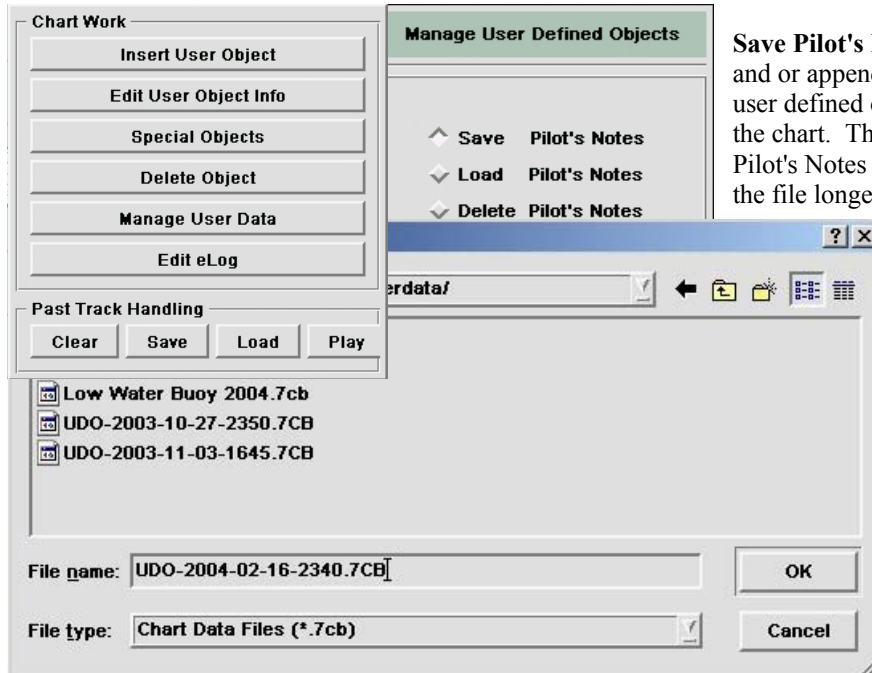


Chart Work / Managing User Data & Vessel Past Track Handling.



Save Pilot's Notes: This feature allows the Pilot to save and or append special objects such as buoys, lights and user defined object areas that have been recently set onto the chart. The new objects will be appended to any Pilot's Notes file if one has been loaded thereby making the file longer. When the **Save Pilot's Notes** button is selected and the **OK** button is pushed the browser window will open, and a default file name will appear that is based on the computers year, month, date and time setting. The Pilot can rename the default name that appears in the file name box.

Load Pilot's Notes: When selected the browser window opens allowing the Pilot to select the desired Pilot's Note file.

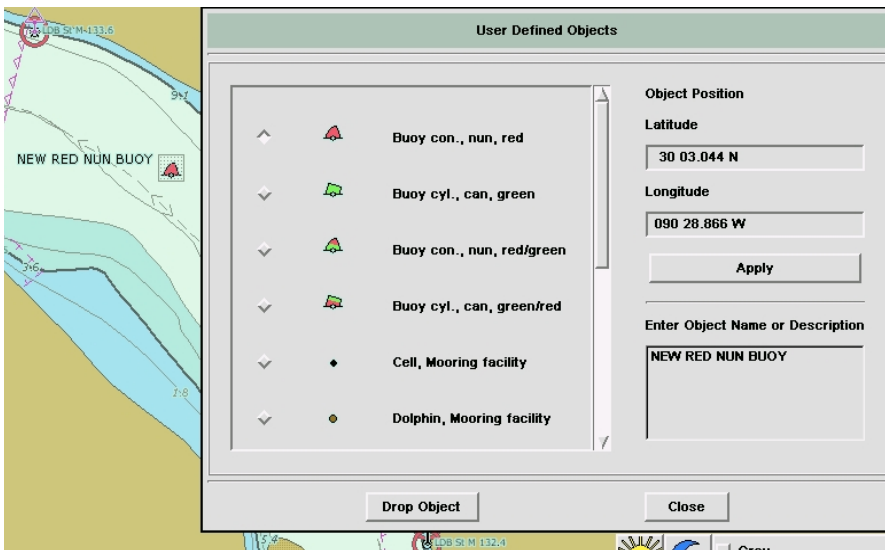
Delete Pilot's Notes: This feature removes all Pilot's Notes from the chart allowing new Pilot's Notes to be loaded.

Past Track Handling: If the past track feature is enabled in the *Configuration Menu* it can be saved separately or appended to an existing preloaded Past Track file. Selecting the Past Track **SAVE** button will open the past track browser window, allowing the new file that has been created or appended to be saved. An automatic file name based on the computers date and time can be changed by typing over the existing name with the desired name. The **CLEAR** button is used to remove all past tracks from the chart. The **LOAD** button opens the **browser window** allowing an existing Past Track to be selected.



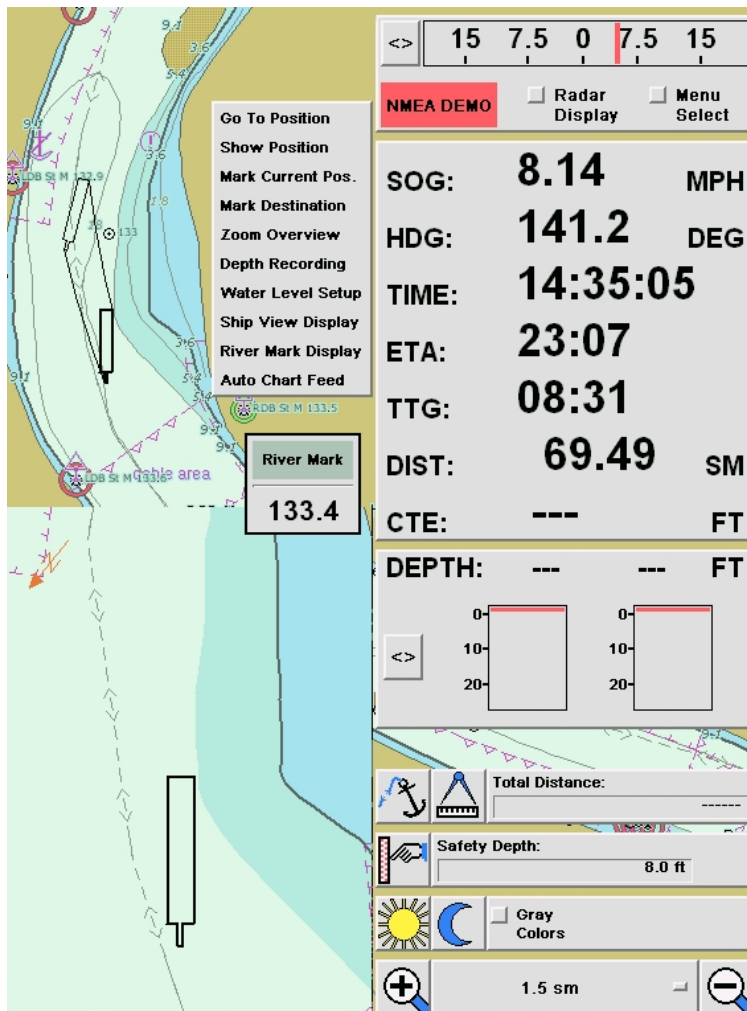
Inserting User Objects: This feature allows Pilots to draw red filled in areas to represent bank line erosion, deep channel areas, new bridges, etc. In the picture left the road leading to the boat ramp and the bank line erosion were drawn with this feature. A line is drawn by positioning the cursor arrow, left clicking the mouse, moving the mouse to the new location and finishing the line with another left mouse click followed by a right mouse click to finish the drawing operation.

A box can be drawn by left clicking the mouse, moving to the new location and left clicking again, and continuing this operation until the start of the line and end of the line are in the same place. A right click finishes the drawing operation.



Special Objects: Buoys, lights, text, boat ramps, cells, etc. can be dropped onto the chart by picking the object, typing in a name for it. Set the position for the object by moving the mouse to the desired location and left clicking the mouse to show the drop location, or type in the known Latitude Longitude values, and select the **Apply** button to move to the known location. A left click on the **Drop Object** button will drop the buoy or other object.

Delete Object: Delete objects one by one using the left mouse key. The mouse cursor must be placed on the buoy position circle when deleting the object.



Context Menu

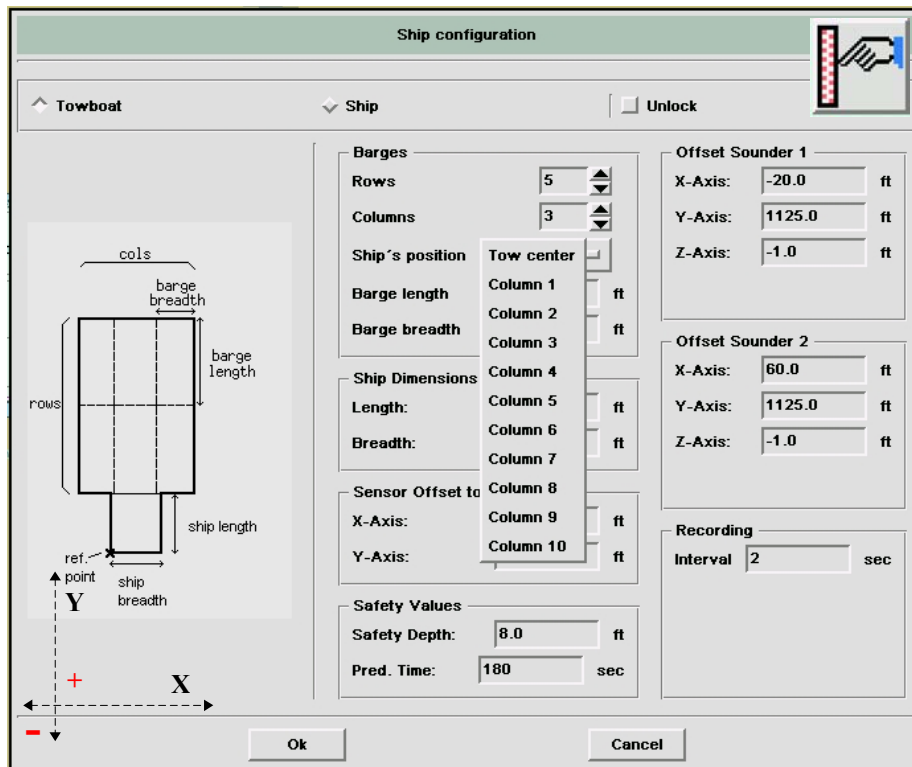
Context Menu: This menu contains frequently used chart controls. To access the *Context Menu* the mouse cursor must be placed on the chart area, to the left of the gray menu, then push the left mouse button.

Go to Position: Opens a River Dialog Box allowing the operator to select a particular river and type in mile marker to view. The *Auto Chart Feed* must be turned off to activate this feature.

Mark Destination: This control allows a destination mark to be set which in turn allows the ETA features to operate. To mark the destination, turn off the *Automatic Chart Feed*, select the *Go To Position* control and pick the river name and type in the mile marker to go to. Once the chart shows the desired area, left click the *Mark Destination* control. The ETA features should start to work immediately. Left click the *Auto Chart Feed* control to return the chart display to the ship's current position.

Ship View Display: This control opens a small heads up window that shows the ship and surrounding chart area. To Zoom In, Zoom Out or Turn Off the Ship View Display, do a right mouse click on the Ship View Display & select the desired operation.

River Mark Display: This control turns on the large format River Mile Display. To close the River Mark window mouse over the window, right mouse click then left mouse click on *Close*.



Ship's Configuration menu

This menu allows the pilot to adjust the number of Columns and Rows in the Tow, set the Ship's position in the tow center or behind a selected column of the tow, set the Barge dimensions and set the Safety Values for Safety Depth & Prediction Time.

The sounder X and Y positions are set by determining the distance from the Reference Point, (located on aft port corner of ship) to each of the transducers.

X – Horizontal distance

Y – Vertical distance

Z - Transducer depth with respect to water level.

The depth sounder log with corrected geographical position tags will be saved at the specified recording interval, i.e. (every 2 or 3 seconds).