

CEACT®

Channel ECDIS, AIS and Course Trajectory
ChartWare for Workboat Computer Systems.



The simple to use XP based electronic chart solution that sets the standard for navigational efficiency and accuracy.

AIS Target Info	
Target Selection	TAHOME
Target Information	
Ship Name	TAHOME
Call Sign	WDC2411
Nav Status	Vessel under way
MMSI Number	36892690
IMO Number	0
Destination	TRR.KENT.
Speed	4.5 mph
Course	295.7 deg
Heading	n.a.
Rate of turn	n.a.
Track CPA	
Find Close	

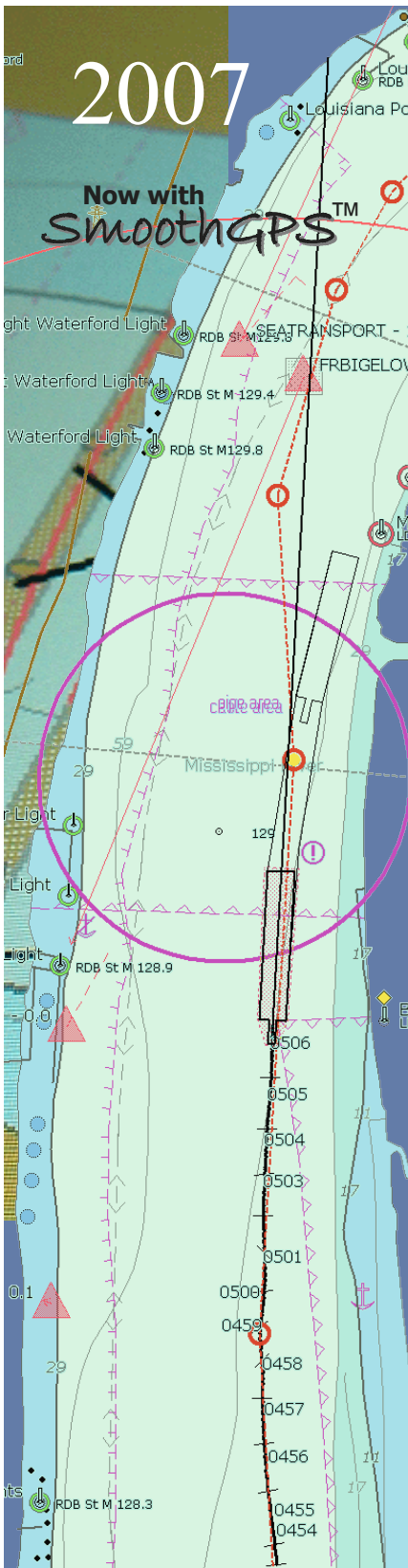
SOG:	11.39	MPH									
HDG:	234.1	DEG									
TIME:	11:39:35										
ETA:	06:57										
TTG:	43:18										
DIST:	493.3	SM									
CTE:	---	FT									
DEPTH:	---	FT									
<table border="1"> <tr> <td><></td> <td>15</td> <td>7.5</td> <td>0</td> <td>7.5</td> <td>15</td> </tr> </table>			<>	15	7.5	0	7.5	15			
<>	15	7.5	0	7.5	15						
<table border="1"> <tr> <td><></td> <td>200</td> <td>100</td> <td>0</td> <td>100</td> <td>200</td> </tr> </table>			<>	200	100	0	100	200			
<>	200	100	0	100	200						
<table border="1"> <tr> <td><></td> <td>200</td> <td>100</td> <td>0</td> <td>100</td> <td>200</td> </tr> </table>			<>	200	100	0	100	200			
<>	200	100	0	100	200						
<table border="1"> <tr> <td></td> <td>Total Distance</td> <td></td> </tr> <tr> <td></td> <td>Safety Depth</td> <td>Prediction</td> </tr> <tr> <td></td> <td>Gray Colors</td> <td>Exit</td> </tr> </table>				Total Distance			Safety Depth	Prediction		Gray Colors	Exit
	Total Distance										
	Safety Depth	Prediction									
	Gray Colors	Exit									
<table border="1"> <tr> <td></td> <td>4 sm</td> <td></td> </tr> </table>				4 sm							
	4 sm										

Distributed by:
CEACT Information Systems
RR1 Box 1350 Wayne WV 25570
Phone: 304-523-3186
Fax: 304-529-1169
sales@ceact.com
Web: www.ceact.com



The Color of Navigation!

CEACT

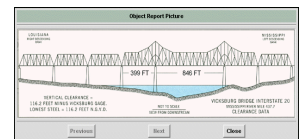
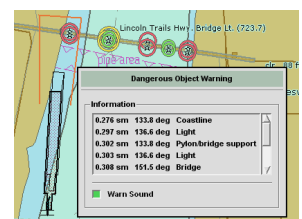
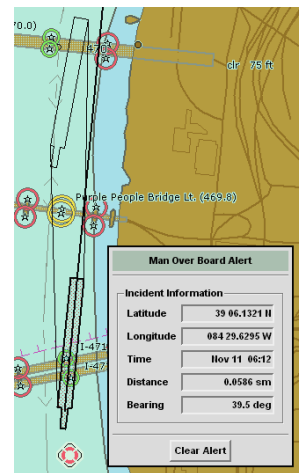
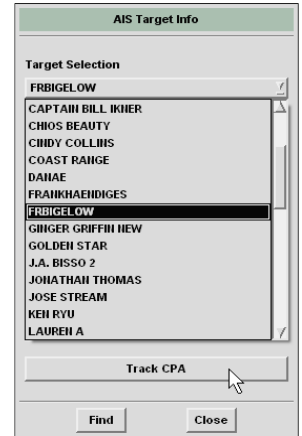


Distributed by:
CEACT Information Systems
 RR1 Box 1350 Wayne WV 25570
 Phone: 304-523-3186
 Fax: 304-529-1169
 sales@ceact.com
 Web: www.ceact.com

REDUCE OVER STEER, IMPROVE EFFICIENCY, INCREASE TON MILES, MAGNIFY WORKFORCE, REDUCE DELAYS & MINIMIZE RISK with CEACT.

CEACT Channel Navigation Features:

- Display Channel Closest Point of Approach area of AIS targets.
- AIS Target Info Display with Target List & Target Find feature.
- Landscape or Portrait display orientation for Pivot LCD Panels.
- Heads Up off centered and North Up centered Display modes.
- Selectable scale units, nautical miles, statute miles, kilometers.
- Channel Text Orientation minimizes text clutter around vessel.
- Menu selectable Large or small text attributes for chart region.
- Go to Position using Channel Mile Marker or Kilometer Marker.
- Enhanced Earth Zoom & Smart Chart Panning Control feature.
- Automatic scrolling chart feed when connected to GPS system.
- True Scale Ship and Barge Tow Building Configuration Menu.
- Ten Color / Intensity display settings for Day or Night Time use.
- Dual VRM, Heading Marker Line and Man Overboard controls.
- Ship View Heads Up window with Zoom In, Zoom Out control.
- Quick Mark feature accurately positions buoy & special objects.
- Rate of Turn indicator with Unit Scale 15, 30 & 60 degree / min.
- Channel Mile Marker / Kilometer Marker Ship's position display.
- Channel Line based ETA, Time to Go and Distance Displays.
- Real Time Course Trajectory Display for Ships or Towboats.
- Bow and Stern Slide Display adjustable in feet or meters / min.
- Pilot's Notes: create, maintain, and backup notes to own media.
- Display Multiple Past Tracks files and own ship Past Track line.
- Route Planning: Automatic, Manual or Convert from Past Track.
- Water Level Setup Menu with Depth Color Contour Corrections.
- Dual input Depth recorder with Transducer Lat / Lon stamps.
- ECDIS based Anti-Grounding and Allision Avoidance Alarms.
- Menus can be hidden, restored, or returned to default location.
- Ship's Data Recorder option with disk storage Feed & Release.
- Display & On-line User Manuals in English, Spanish or Chinese.
- Embedded Quick Reference Links Training guide in PDF format.
- Configurable GPS Position Accuracy Probability Safety Outline.
- GPS based Automatic Making Way Detection Alarm notification.
- Automatic Backup and Recovery of Temporary User Data files.
- Display Soundings with manageable safety depth filter controls.
- SmoothGPS optimizes vessel outline refresh rate performance.
- View pictures of bridges, wrecks, dams, etc., in TIFF or JPG.
- Optional Security solutions by Dongle, MAC ID or Hard Disk ID.
- Admin support for imaging, display content, disk storage, etc.
- Engineering & Support for corporate application customization.



The Color of Navigation!

CEACT